

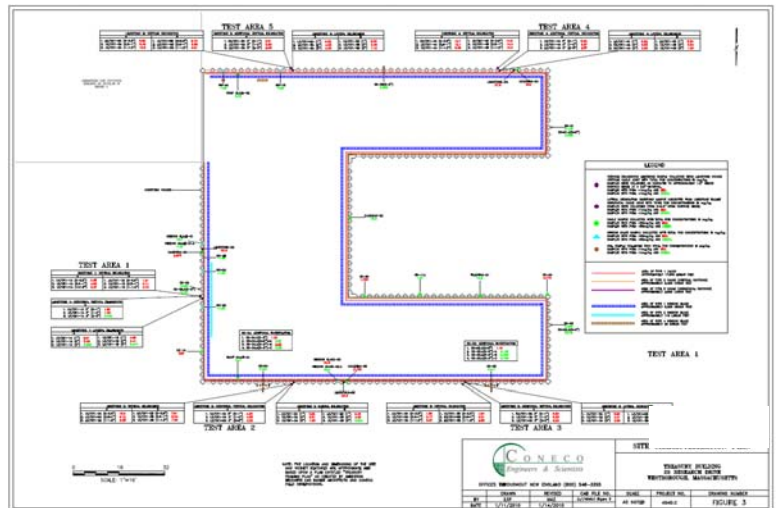
Building Materials Assessment

Project Details

- TSCA-Regulated and EPA-Approved Risk-Based PCB Disposal
- PCB Bulk Product Waste Removal and Disposal
- PCB Remediation Waste Encapsulation
- Building Materials Assessment, Bulk Materials Sampling, Encapsulation Product Efficacy Trials, Contract Management, and Long-Term Monitoring

Project Description

The project Site is a commercial property located in Westborough, Massachusetts. Assessment activities were conducted prior to renovation efforts at the Site. Caulk, window glazing, and limestone building materials were evaluated for the presence of polychlorinated biphenyls (PCBs). Over 130 samples were collected from an investigation area encom-



passing approximately 46,900 square feet in surface area. Based on the results of the completed Site characterization, a Risk-Based Disposal was initiated at the Site. Remedial activities were conducted in accordance with approvals issued by the U.S. EPA. Encapsulation product evaluation criteria included PCB wipe sampling, pull-off adhesion testing, and RILEM water absorption testing. Coneco directed the removal and proper disposal of the identified PCB Bulk Product Waste and the encapsulation of PCB Remediation Waste. Certain bulk materials remaining at the Site are managed through an ongoing long-term monitoring and inspection program. Continued compliance with the terms of the EPA Risk-Based Disposal Approval include Site-specific contingency planning and management.

